



**Integrating Content and Language
in Higher Education**

ICLHE Annual Report and Financial Statements 2022



ICLHE Annual Report and Financial Statements 2022

Annual Report from the Board	5
Financial Statements	15
Auditors' Reports	19
Membership Report	21
Reports from Regional Groups	23
East Asia	23
Italy	25
Spain	26
Report from PhD Special Interest Group	28



Integrating Content and Language in Higher Education

Annual Report 2022

Sixth Annual Report from the Board to the ICLHE Association

Maastricht, 20 October 2022.

To all members of the Association

The Board is pleased to present its sixth annual report to the members. It has been another unusual year, though as a young association we have yet to discover what “usual” is. Activities have been somewhat restricted, although the Regional Groups have managed to host events. The Association held a Symposium – online – with the accompanying AGM, and also streamed two webinars during the reporting year. Much work has gone into setting up a new website for the Association. And despite restrictions the membership has continued to grow.

The global COVID-19 pandemic continued to affect us all throughout this entire year. Just as last year, the Board hopes that you have managed to cope with the restrictions, and the consequent online or hybrid teaching and the parallel impact on research work. It has compelled many changes to the way we work and also to the way we communicate within the ICLHE Association. The Board also hopes that those of you who have caught the virus have also made a speedy recovery.

The impact of the pandemic continued to be evident in that, just as in 2020 at the **Université de Mons** (UMONS), the annual gathering of ICLHE in 2021 also had to take place completely online streamed from **Maastricht University** (UM) in the Netherlands. ICLHE is most grateful to **René Gabriëls**, **Bob Wilkinson** and their team at the UM, for their smooth management of the 3rd Symposium. Participants had to pay to join the event online, and it went very well, attracting 124 registered online participants. The regional groups and the PhD SIG were also compelled to run events online, although later in the reporting year some managed face-to-face events.

The 2021 Symposium entitled “Englishization of higher education: A phenomenon of glocalization?” was run online on 21-22 October 2021, using facilities provided by one of Maastricht University’s studios. The online nature of the event enabled the organizers to recruit speakers from many parts of the world with key speakers joining from Asia, Europe and the Americas: **Kristina Hultgren** (UK),

Kwok-kan Tam (Hong Kong), **Philippe Van Parijs** (Belgium), **Alma Maldonado-Maldonado** (Mexico) and **Aminata Cairo** (USA at the time). Twelve other speakers were invited to contribute to two streams of parallel sessions. Many of the presentations were recorded and are available in the Member Zone of the ICLHE website.



ICLHE Symposium 2021, online: René Gabriëls in discussion with Philippe Van Parijs.

Administrative and legal matters

ICLHE is an Association registered the Chambers of Commerce in the Netherlands under Dutch Law. During the reporting year, changes came into force in the Netherlands that affect the Association. All Board members are now formally registered under the Ultimate Beneficial Owners legislation which requires the registration of all the officials of a not-for-profit association or club, just as shareholding owners of other organizations have to be registered. The legislation aims to combat money-laundering and the financing of illegal activities such as terrorism. Not that your Association is involved!

A second piece of legislation is the so-called Law on Management and Supervision of Organizations. This legislation came into force on 1 July 2022 and requires all associations and clubs, including those that are not formally registered with the Chambers of Commerce, to abide by clear and transparent practices. ICLHE does abide by these, although some aspects need improvement. ICLHE has sought the advice of an umbrella organization to assist in this process which is still ongoing.

ICLHE, it should be noted, is exempt from taxation and does not charge VAT. It does have to pay VAT if it buys services or products from others. ICLHE does not have to submit its returns to the taxation authorities; it has to account solely to its members. However, under the new laws in the Netherlands, the tax authorities and other authorities in charge of registration can ask for specific information.

As an association registered in the Netherlands, ICLHE is obliged to have a registered official resident in the Netherlands. Similarly, the Association's Dutch bank, ABN-AMRO, also requires a signatory resident in the country. At the time of ICLHE's registration in 2016, the notary informed us that should there come a time when there is no longer a Board official resident in the Netherlands, then the Association would be obliged to transfer its seat of registration to another jurisdiction. The notary advised that the easiest and cheapest process would be simply to set up a parallel association in another jurisdiction according to the laws of that country, and then close down the existing association and transfer all assets etc. to the new association. It is important for ICLHE members to

be aware of these implications, should there no longer be a Board member resident in the Netherlands. Timely planning is required.

ICLHE Elections

Normally the Board would have been reporting on the Board elections which would have been scheduled in October 2021. Due to the pandemic, the elections were shelved till the current AGM. So elections take place at the 6th AGM on **Thursday 20 October 2022** in Maastricht, Netherlands. The Board is inviting members who cannot be physically present to contribute their votes to the elections.

Inma Fortanet-Gomez is stepping down from the Board. She has not only organized the ICLHE Conference in 2019 at Castelló, but also edited the ICLHE Newsletter since its inception. The Board is extremely grateful for her contribution to ICLHE since before the official establishment of the ICLHE Association in 2016.

Bob Wilkinson is stepping down as chair of the Association but will continue to assist the Board in matters of legal registration.

Website and Webinars

The ICLHE website remains a demanding activity and keeping it up-to-date also requires input not just from the Board but also from members. The Board was aware of problems with the existing website which was hosted by Wordpress: it was no longer meeting the needs of the Association. The Board therefore took the decision to design a new one. **Annette Bradford** took on the demanding task.



Screenshot of the new website.

The new website will be formally launched at this AGM.

The fresh look to the new website should make it easier to access and navigate. Many of the existing features are still there. The Member Zone includes information on online events, presentations from

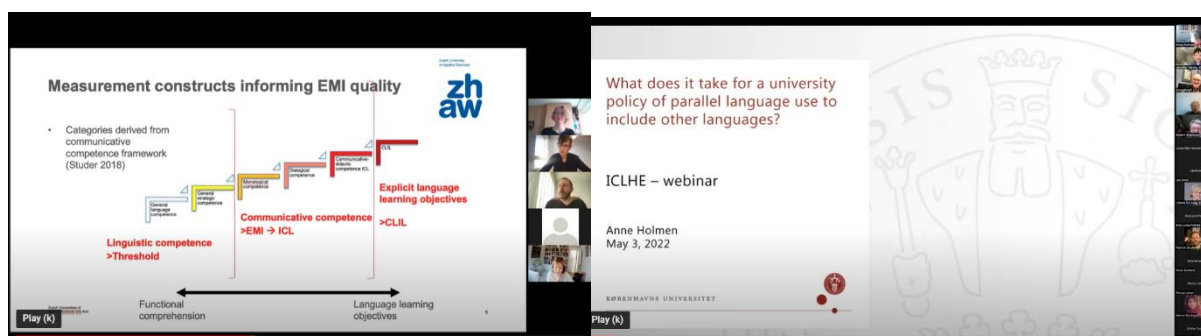
previous ICLHE events, among other matters. Each of the RGs and the PhD SIG has a dedicated section to allow them to share news and activities beyond the immediate confines of the group.

Note especially the Members Directory. This is the space where you can add and update your own information so that other members may find shared interests. Please check your own listing and update it as necessary.

The recordings from the 2021 Symposium at Maastricht University are available via the Member Zone on the website: <https://iclhe.org/>

The Board wishes to express grateful thanks to **Annette Bradford** for her hard work in designing and setting up the new website, and also to **Jenny Valcke** and **Tadhg Ó Ceallaigh** for managing this challenging portfolio.

ICLHE streamed two webinars during the reporting period, the first by **Patrick Studer** entitled “Language assessment literacy and language and instruction in higher education”, and the second by **Anne Holmen** (University of Copenhagen) on “What does it take for a university policy of parallel language use to include other languages?”. We thank the speakers for these extremely informative webinars. If you missed them, the recordings and the slides are available on the Member Zone.



Screenshots from webinars: Patrick Studer’s (left) and Anne Holmen’s (right)

At present ICLHE aims to run two webinars per year. The next event takes place in November 2022 where a panel from Hawaii, Finland, the Basque Country, and Scotland will debate “Higher education provision through minority languages: International policies, practices and perspectives”. The exact date was not known at the time of finalizing this report. Full details will be announced on the website and via the association email, including information on a spring webinar.

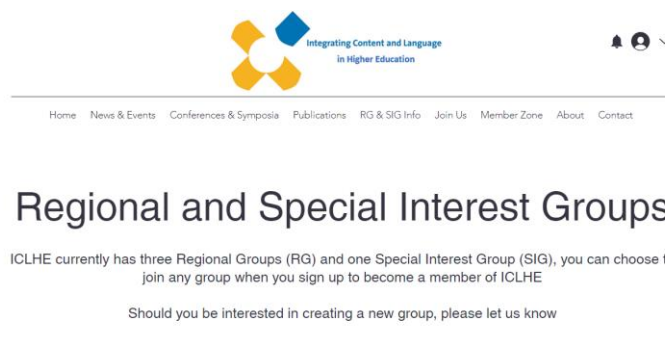
Newsletter

Thanks to the Editor, **Inma Fortanet-Gómez**, ICLHE again published four Newsletters during the year. Newsletters provide quick short reports of activities, projects or events that ICLHE members have been involved in, as well as news of recent publications. The Newsletter also highlights the activities of members including PhD students and SIG/RGs. The Board warmly thanks Inma and the contributors. Newsletters are all available via the Member Zone on the website: <https://iclhe.org/>

SIGs and Regional Groups

ICLHE’s three Regional Groups have all been very active in running symposia during the year: **East Asia** held its fourth annual symposium on line on 23 April; **Spain** the University of Almería hosted the

Spain Regional Group's two-day event face-to-face on 15-16 June entitled "Different perspectives on the sustainability of ICLHE in Spanish higher education", and **Italy** set up a mapping tool to coordinate networking among its members. All three groups deserve applause for managing to exchange ICLHE experience and research work despite the persisting challenges of the pandemic. **See the separate reports.**



Screenshot of the Regional and Special Interest Groups section on the ICLHE website

The **PhD SIG** has been active online holding three meetings on various PhD topics during the reporting period, with a fourth imminent on "Procrastination". **See separate report.** The Board reiterates that there are quite a number of PhD students among ICLHE members and the PhD SIG would encourage every ICLHE PhD student to join and share information about research. In addition, there are several PhD students who are interested in ICLHE, though not members, but who might benefit from more collaboration with the PhD SIG. The Board congratulates all PhD members who have successfully defended their theses during the year.

Membership

Despite the impact of COVID in preventing face-to-face meetings this year, the Board is happy to report steady membership and the increase seen in recent years has continued throughout the reporting year to 161 active members at the reference date of August 31.

For more details see the Membership report to the AGM from the membership secretary, **Ute Smit**.

Finance

The Association continues its relatively healthy growth. Income less expenditure has again enabled a small growth in the financial reserves. As the Treasurer, **Ute Smit**, specifies in her Financial Report in more detail, much of the expenditure has been on necessary administrative and website matters to ensure that the Association can run smoothly.

The Board reiterates its policy for SIGs and Regional groups, among others. The Board provides a small running cost grant to each RG and SIG, which may help towards maintaining the group, organizing meetings or contributing to honoraria to invited speakers. Moreover, ICLHE sets aside a fund to support initiatives during the financial year.

Your Board

During the year, the Board held eight online meetings including one during the 2021 Symposium. The Board was able to devote much time to content matters, such as the current Conference, the Webinars, Newsletter, and Website content, although technical issues concerning these points also took time.

Inma Fortanet-Gómez who has been responsible for the Newsletter and for Conference Liaison announced that she would be stepping down from the Board, as indicated earlier.

During the year **Bob Wilkinson** also announced that he would be stepping down as Chair of ICLHE, although he will remain active for the next term if elected to the Board.

Jenny Valcke and **Tadhg Ó Ceallaigh** (TJ for short) continued their work on managing the website and electronic communications on social media. **Annette Bradford** has developed the new website and is liaison officer for the Regional Groups and SIGs.

Ute Smit has been managing both the roles of Membership Secretary and Treasurer. **Patrick Studer** holds the portfolio as Secretary, managing Board Meetings as well as the AGM.

The various portfolios may change following the 2022 elections.



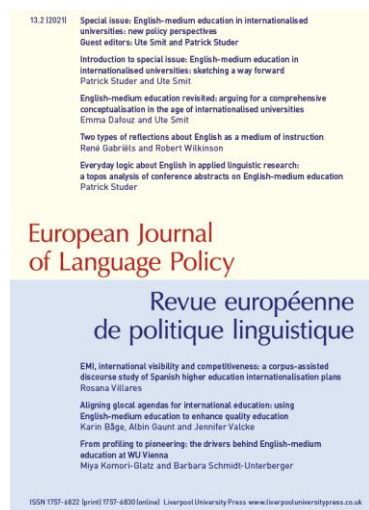
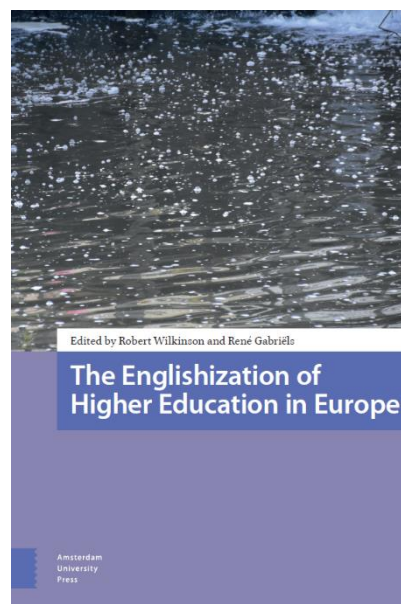
ICLHE Board at Castelló 2019 (the last time the Board could meet in person): Jenny, Bob, Ute, Patrick, Inma, and TJ, with Annette (above)

Publications

The following is only a selection of books and special issues written or edited by members of ICLHE.

ICLHE assisted in the publication of a book on *The Englishization of Higher Education in Europe* edited by **Robert Wilkinson** and **René Gabriëls** (Amsterdam University Press, 2021). ICLHE's help enabled the book to be published as open access. It includes chapters on Austria, Belgium, Croatia, Denmark, Estonia, France, Germany, Italy, Latvia, Netherlands, Poland, Russia, Spain, Sweden and Switzerland, as well as an epilogue by **Philippe Van Parijs**. Half the authors are ICLHE members. Download from:

<https://library.oapen.org/handle/20.500.12657/51121>

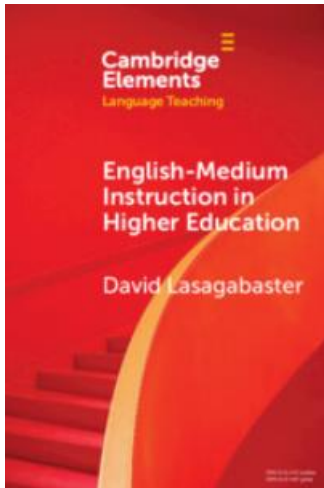


The *European Journal of Language Policy* published a Special Issue on “English-medium education in Internationalised Universities: New Policy Perspectives” (2021, 13(2)). Edited by two ICLHE board members, **Ute Smit** and **Patrick Studer**, this issue includes six contributions approaching the interface of internationalization and English-medium education from new theoretical and methodological perspectives, offering new conceptual and empirical

insights. See <https://www.liverpooluniversitypress.co.uk/journals/id/73/volume/13/issue/6516/>

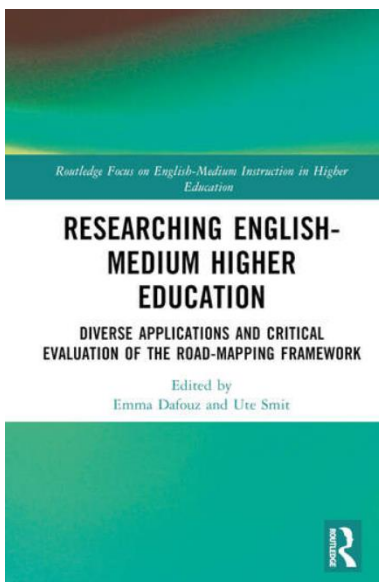
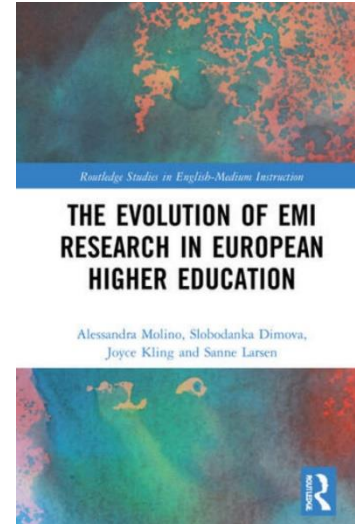


Publications from the 6th ICLHE Conference at Castelló appeared during 2021-22. Articles comprising the Special Issue of *System*, edited by **Inma Fortanet-Gómez** and **Noelia Ruiz-Madrid**, on *Integrating Content and Language in Higher Education*, appeared online, in issues 103, 104 and 105.



David Lasagabaster published *English-Medium Instruction in Higher Education* (Cambridge University Press, 2022). This book, published in the Elements in Language Teaching series, provides critical insights into EMI implementation and the results obtained so far in diverse university contexts.

Alessandra Molino, Slobodanka Dimova, Sanne Larsen, and Joyce Kling published a monograph entitled *The Evolution of EMI Research in European Higher Education* (Routledge, 2022). This book presents state-of-the-art research into English-medium instruction (EMI) in European higher education over the last 20 years, offering a comprehensive comparative analysis toward identifying gaps in our understanding of relevant theories, research, and practice.



A volume by **Emma Dafouz** and **Ute Smit** entitled *English-Medium Education across Multilingual University Settings: Applications and Critical Evaluations of the ROAD-MAPPING Framework* is scheduled for publication in 2023 in the series: Routledge Focus on English-medium Instruction in Higher Education (Series Editors: Annette Bradford & Howard Brown).

Monica Clua guest-edited a special issue of the *CLIL Journal of Innovation and Research in Plurilingual and Pluricultural Education* (*CLIL Journal*) on “English-medium instruction in higher education” (2022, 5 (2)), with contributions from many ICLHE members. Download from: <https://revistes.uab.cat/clil/issue/view/v5-n2>



Two further publications from the 6th ICLHE Conference are still forthcoming: A Special Issue for the *Journal for Innovation in Language Learning and Teaching* edited by **Noelia Ruiz-Madrid** and **Inma Fortanet-Gómez**, and an edited book to be published by Routledge, with the title *Integrating Content and Language in Higher Education: A Multimodal Perspective*, edited by **Vicent Beltran-Palanques** and **Edgar Bernad-Mechó**.

Looking forward

Annual reports conventionally focus on the reporting year, but they also look forward to the coming year. The new reporting year has of course begun. At the time of writing we look forward to an exciting Conference under the title “EMI, ICLHE and Englishization: Reflecting on the changing university” at Maastricht University on 18-21 October 2022. The ICLHE AGM takes place on Thursday 20 October during the Conference. The Board warmly thanks **René Gabriëls**, **Bob Wilkinson**, and all the team at Maastricht University for their hard work and for enabling the hybrid Conference to go ahead. It is open to all, with discounts for ICLHE members and members of universities in Maastricht University’s networks. ICLHE is grateful to the support of Maastricht University and the Faculty of Arts and Social Sciences in providing services and time to enable the Conference to go ahead and to sponsorship grants from the University Fund SWOL and the Research Stimulation Fund of the Faculty of Arts and Social Sciences.

Next Symposium

The 2023 ICLHE Symposium will be hosted by **Ute Smit** at the **University of Vienna, Austria**. More details will be announced during the 2022 AGM.

The Board is very interested in hearing from members about possible venues for the **8th ICLHE Conference in 2024**. Potential hosts may also submit proposals for a smaller Symposium instead.

On behalf of the Board of the ICLHE Association,

Signed:



Robert Wilkinson

Chair



Financial Report (2021-2022) & Budget (2022-2023)

The **financial report (see Table 1)** shows that the last financial year (July 2021 – June 2022) was a positive one for ICLHE on various counts:

1. We ended in the black and could add € 2668.84 to our reserves.
 2. Our financial activities during the year reflected the activities of the association:
 - a. increased web-presence (costs for website + its maintenance 'Wild Teak Media')
 - b. our events: 1 webinar (honorarium); support for RG Spain (stipend), the 2020 symposium in Mons (gifts for organisers)
 - c. increased membership (subscriptions to bank account and PayPal account): 125 (full members) + 24 (student members) in total, but note that these include some payments for two years and that our actual membership is lower.
 3. As we have two accounts (bank & PayPal), there is regular movement between them (see Table 1).
 4. Our PayPal account is very helpful for paying and receiving membership fees, but also incurs extra cost (see sum of PayPal Fees).
 5. Compared to the previous financial year (2020-21):
 - a. We could again finalise the year in plus.
 - b. We had considerably more turn-over, esp. more expenses (2020-21: total expenses: € 7185; total income: € 8130)
 - c. We could lower the number of refunds for subscription fees (2020-21: 28 full memberships, 2 student memberships).
- ICHLE was at least equally active in 2020-21, and ended it financially a little bit stronger.

Auditing reports (see below)

The ICLHE books were audited by Dr Diane Schmitt and Dr Julie Walaszczyk and found to be in order.

Table 1: Financial Report (of past year)**ICLHE Financial Activities July 2021 – June 2022 (in €)
Balance Sheet, incl bank account and PayPal account**

Bank account		Expenses	
ABN AMRO Bank - account costs		155.30	
board liability insurance		363.00	
Honorarium for Webinar		250.00	
Postage		74.43	
Present for ICLHE Symposium organiser		207.90	
Renewal iclhe.org domain		394.08	
Seminar participation (for new Dutch law - WBTR)		151.19	
Wordpress Business		300.00	
PayPal account			<i>subscriptions refunded</i>
General Withdrawal - Bank Account	1500.00		
Subscription Payment Full - Refund	440.00		11
Subscription Payment Student - Refund	25.00		1
Wild Teak Media monthly fee - website	855.00		
Sum of PayPal Fees	224.55		
<u>Total expenses</u>		<u>4940.45</u>	
Bank account		Income	<i>subscriptions</i>
Book purchase		45.00	
Subscription payment student		50.00	2
Subscription payment full		1840.00	46
transferral from PayPal		1500.00	
PayPal account			
Subscription Payment Full		3600.00	90
Subscription Payment Student		575.00	23
Subscription Payment Full - Refund Fee		19.29	
<u>Total income</u>		<u>7629.29</u>	
<u>Balance</u>		<u>2688.84</u>	
Previous Bank Balance	7621.46		
Previous PayPal Balance	183.85		
Current Bank Balance	9160.56		

Current PayPal Balance	1333.59
<u>Change/Balance</u>	<u>2688.84</u>

Budget (2022 - 2023)

Table 2 presents the preliminary budget, which includes likely sources and amounts of income, totalling roughly € 14,000 and lists expenses that cover running costs and what we need to support our expected activities (conference, symposium, SIG & RG events, webinars). Further explanations are offered in footnotes.

Table 2: Estimated budget (for running financial year)

ICLHE Budget - next financial year (1 July 2022 - 30 June 2023)		
Income	11/09/2022 in €	
Carried forward from 2021-2022 (bank account)	9160.56	
Carried forward from 2021-2022 (PayPal account)	1333.59	
Conference 2022 Maastricht	1200	1
Membership 2022	480	2
Membership 2023	1800	3
Total	13974.15	
Expenses	in €	
Website (registration, hosting)	0	4
Alternative domain costs (iclhe.com)	100	5
Wix VIP	520	6
New website	1050	7
Account charges (at least €16.93 per month)	240	
Board liability Insurance	400	
Office costs (materials, copying, postage, etc.)	300	
Conference Maastricht 2022	300	8
Symposium planning 2023 Vienna	400	9
PhD presentation/poster awards (Conf 2022)	1150	10
Support for RGs, SIGs	1200	11
Webinars (2: Nov 2022 + April 2023)	500	12
Other activities & initiatives	2000	13
Total	8660	
<i>To Reserves</i>	<i>5314.15</i>	<i>14</i>

- 1: As for previous ICLHE conferences, 4% of the conference fees (estimated at € 30,000) will go to the association.
- 2: Some 2022 memberships are expected to be paid in 2nd half of year (budgeted: 12 à € 40).
- 3: This is based on a conservative estimate of 90 full members for 2023, of whom half can be used for this financial year.
- 4: We paid the website fees for 5 years in March 2022.
- 5: To prevent anybody else from using 'iclhe.com', we have been paying the domain costs, which are again due in 2023.
- 6: As our new website is based on WIX, we needed this VIP-package, paid for 2 years.
- 7: The new website was designed and implemented by 'Annette Bradford International Consulting and Editing'. The fee of € 1000 was paid in September (and required extra bank transferral costs).
- 8: Ear-marked for small presents for conference organisers.
- 9: Support for travels in preparation for the 2023 symposium.
- 10: In order to support early career researchers, ICLHE awards PhD Presentation Prizes at the 2022 conference.
- 11: ICLHE wants to offer some support for the activities of our Special Interest Groups and Research Groups, budgeting for a maximum of € 250 per group (presently there are four).
- 12: Presenters of an ICLHE webinar receive a remuneration of €250 (two are scheduled for this financial year).
- 13: To support further initiatives that might come up during this financial year.
- 14: We estimate € 4000 as minimum for our reserves.

Auditing reports

1)

Diane Schmitt

70 Charlbury Road

Wollaton

Nottingham NG8 1NG

14 September 2022

Ute Smit

ICLHE Treasurer

University of Vienna

Dear Ute Smit,

This is to certify that I have reviewed the financial records for ICLHE for the period 1 July, 2021 – 30 June, 2022 and have found everything to be in order.

Regards



Diane Schmitt

2)

Julie Walaszczyk
Avenue Ulysse 14 box 6
1190 Brussels
Belgium

Brussels, 15 September 2022

To whom it may concern

This is to certify that I have reviewed the financial records for ICLHE for the financial year July, 2021 – June, 2022 and have found everything to be in order."

Best regards,

Julie Walaszczyk

A handwritten signature in black ink, appearing to be 'Julie', with a long horizontal stroke extending to the right.

Membership Report 2022

Memberships in the financial year 2021-2022:

As included in the **financial report (see Table 1)** ICLHE received the following payments:

- 125 full members (11 reimbursed*)
- 24 student members (1 reimbursed*)

* PayPal's default setting for membership payments is 'subscription', which means that unless cancelled such payments recur on an annual basis. This has caused some double payments of memberships, which have either been reimbursed or, if taking place in the second half of the year and acceptable to the member, kept and already booked for 2022. We are very glad that the overall number of reimbursements has decreased noticeably since the preceding year, which we take as a sign that the members have become more familiar with the PayPal payment system.

Note that these numbers include various cases of two membership payments for one member for the years 2021 and 2022. Such double payments within less than 12 months result from members paying their annual membership fees at different points in time.

Reflecting our system of annual membership, the following report focuses on calendar years.

Membership 2022 (at reference date)

At the reference date of Aug. 31, the status of membership for this year is the following:

Active members:	161
Paid up full members:	133
Paid up student members:	28
Not paid	31 – with 12 still possible open Paypal subscriptions

Distribution by region (see Figure 1)

Our association is highly international. As far as we can ascertain this based on email addresses and other publicly available information, ICLHE members work and live in 36 different countries (an increase of 7 countries to 2021). While there is a clear European focus, we have members in 17 non-European countries spread over all other continents (compared to 14 in 2021). At the same time, certain countries are particularly strongly represented, first and foremost Spain, followed by Italy, Japan and the Netherlands. These strong regional representations are represented in our regional groups.

Development over time (see Figure 2)

Our membership numbers have grown over the last four years (56 in 2018 vs. 161 in 2022). We could also attract many more student members (28 in 2022 vs. 5 in 2018), who are also represented

in the PhD SIG Note that the slight decrease in income through membership fees from 2021 to 2022 in Fig. 2 is due to the earlier reference date for this year’s membership report (Aug. 31 vs. Oct. 3 last year), thus including fewer membership payments than at last year’s AGM. It does not reflect the actual increase in number of members.

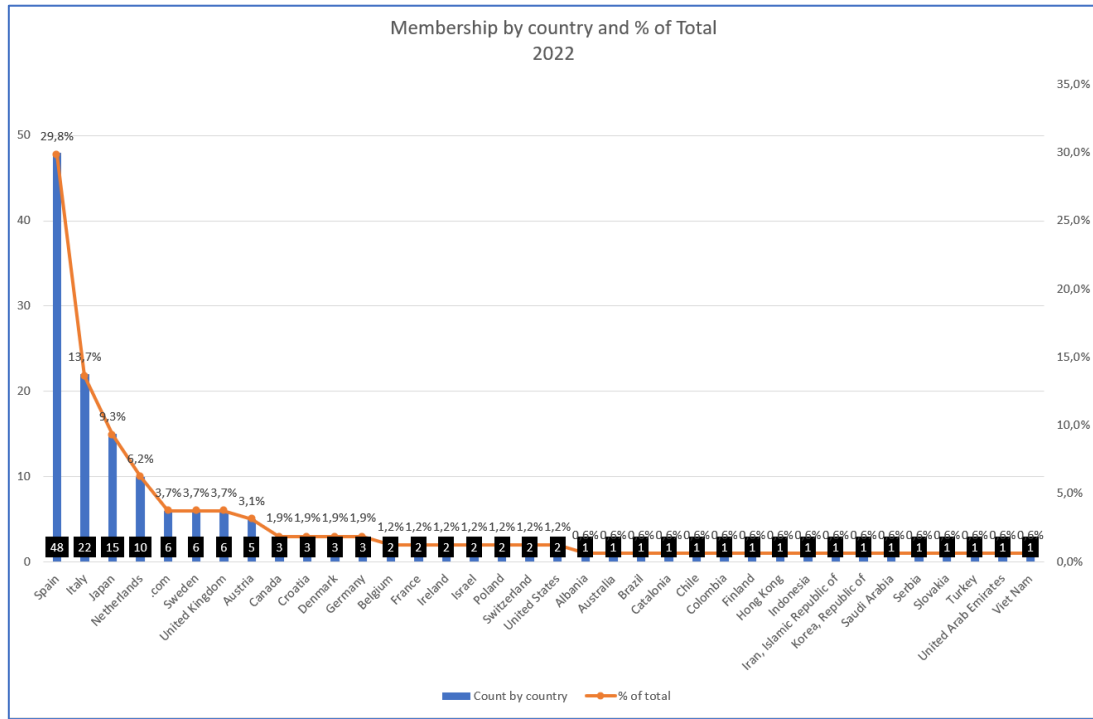


Figure 1: Regional distribution of members (based on their email addresses and publicly available information); “.com” includes members with such email addresses who could not be clearly placed into a specific country

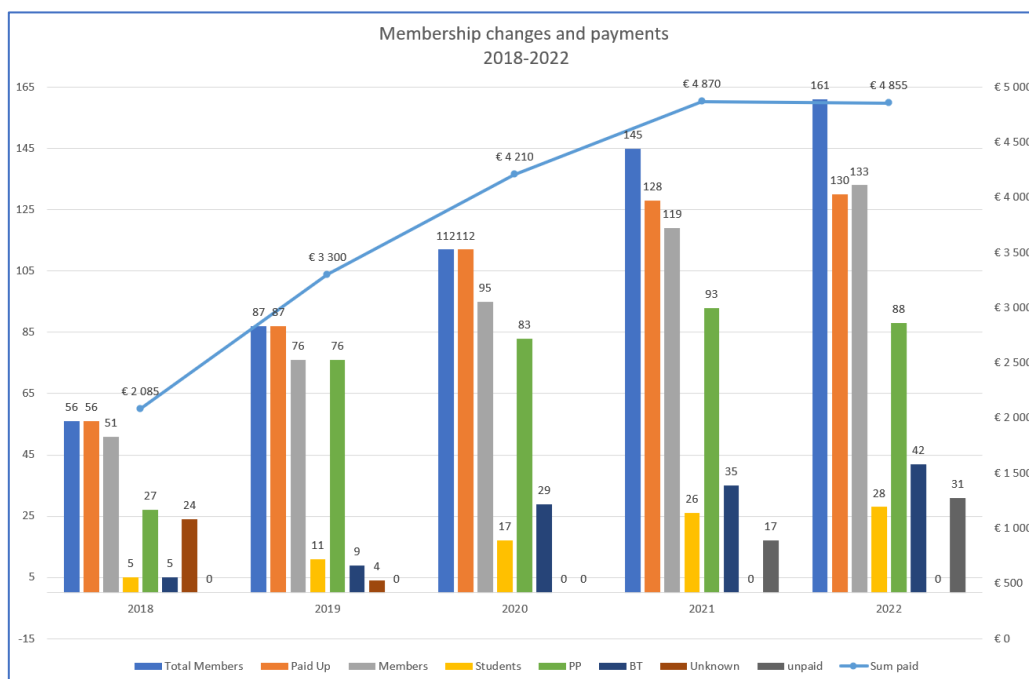


Figure 2: Development of membership from 2018 to 2022; reference date for 2022: 31 August



East Asia RG Annual Report 2021-2022

Current members

Our membership base is informal. We provide interested parties with access to our newsletter via mailchimp (128 subscribers) on a quarterly basis. A newsletter is sent to them four times a year (in January, April, July, and November), as well as special volumes for symposia and other events. Our social media platforms allow them to communicate with us as well: Facebook group (75 members) and Twitter (32 followers). As compared to last year, our Facebook group has more than ten new members, our newsletter has more than 20 new subscribers, and the number of followers on Twitter is also increasing.

Leadership Team

The coordinators met 11 times in 2021 and seven times in 2022 (via Zoom). The purpose of the meetings is to discuss the newsletter content and share updates from the coordinators, as well as to discuss and plan for the annual symposium.

Tho Doan Vo (Lecturer, University of Economics, Ho Chi Minh City) has joined us as our new Community Outreach coordinator.

Thanks to Annette Bradford, our website coordinator, we have a website for sharing updates from our SIG: <https://iclhe-eastasia.mystrikingly.com/>

We have currently 8 coordinators: **Coordinator:** Mahboubeh Rakhshandehroo; **Co-Coordinator/Treasurer:** Yoko Kusumoto; **Events Leader:** Howard Brown; **Community Outreach:** Keiko Tsuchiya (Japan); Tho Doan Vo (Vietnam); **Newsletter Editor:** Maria Vassileva; **Social Media Coordinator:** Graham MacKanzie; **Website coordinator:** Annette Bradford

The fourth ICLHE East Asia Online Symposium

(online) April 23rd, 2022

The fourth annual ICLHE East Asia Symposium was held online with more than 50 registered participants. We began the morning with a panel discussion on the topic of positive outcomes in ICLHE, examining experiences in Japan, Taiwan, and Vietnam. In the afternoon, Diane Pecorari from the City University of Hong Kong joined us for a plenary session on the relationship between English proficiency and EMI. Later in the afternoon, parallel sessions discussed some of the current issues in ICLHE, including interaction and engagement strategies for faculty in EMI, beliefs about CLIL among teachers, translanguaging within a CLIL context, and e-learning approaches in academic vocabulary. Our parallel sessions were followed by interactive roundtable discussions on ICLHE in the natural sciences and team teaching in ICLHE. A social event was held online to conclude the symposium. In 2023, we hope to host the 5th annual symposium in person.

Report compiled by Mahboubeh Rakhshandehroo, East Asia RG Coordinator



Italy RG Annual Report

2021-2022

In the past year, ICLHE Italy has sought to consolidate its network of 24 members through use of a mapping tool (Miro) that enables the design of an online and interactive concept map. The map, which identifies RG members, their individual research areas and related publications, can be continually updated by members in order to provide an up-to-date overview of the group's activities. Since the Italy RG was established in April 2020, during the Covid-19 pandemic, and face-to-face regional events have not yet been possible, this tool has been particularly helpful for virtual networking among RG members. We look forward to the ICLHE conference at Maastricht in October 2022 as an opportunity for our RG members to finally meet face-to-face and get to know each other in person.

Italy RG activities

- **12-13 July 2022** – brief presentation of ICLHE Italy activities by L. Mastellotto & R. Zanin during the “Making Multilingual Universities Work: Case studies International Workshop” hosted by University Ukshin Hoti (Prizren) with the collaboration of University of Vienna (Prof. Christiane Dalton-Puffer).
- **Upcoming event** – AIA 2022: the annual conference of the Italian Association of English Language and Linguistics (*Associazione Italiana di Anglistica, AIA*) will meet at the University of Catania, 15-17 September 2022. The planned seminar “Integrating Content and Language in Education: Experimenting with Integrative Practices” (panel n. 13) organized by Francesca Costa (Unicatt) and Lynn Mastellotto (Unibz) will take place on 15.09. Italy RG speakers participating in the event include: Elena Borsetto, Letizia Cinganotto, Maria Micaela Coppola, and Chiara Polli. The conference programme is available at this link: <http://www.aiaxxx.unict.it/>

Report Compiled by Lynn Mastellotto, Spain RG Coordinator



Spain RG Annual Report

2021-2022

Annual RG symposium

During this period, the Spain RG has been active in the organisation of its annual symposium which **took place onsite (for the first time!)** at the Universidad of Almería (Spain) from 15 to 16 of June, 2022. With title ‘Different perspectives on the sustainability of ICLHE in Spanish

higher education’, the symposium attracted over 30 ICLHE members from all over Spain and included two invited plenary speakers. The opening plenary was Jenny Valcke from Karolinska Institutet (Sweden) and the closing Marta Aguilar Pérez (Universitat Politècnica de Catalunya). There were 16 papers delivered in two parallel sessions, one focusing largely on ‘Teachers’ attitudes and professional Development’, and the other on ‘EMI in the classroom’. In addition, there was a PhD corner where the two doctoral students awarded presented their on-going research and received a diploma. To close the symposium, there was a round table where members of the hosting university and two invited speakers from Universidad de Córdoba and Universidad de Alicante engaged actively.

By and large, the symposium was very well-attended not only by the RG members (over 70% of the total number of members) but also by other participants from the University of Almería as well as non-RG members who showed an interest in becoming part of the association. A host proposal was requested as well to organise the 2023 symposium. The deadline to send the proposals to the board is the end of October 2022.

Leadership team

With regard to last year, there have been no changes in the roles/positions of the members of the board in the Spanish RG:

Coordinator (Chair): Emma Dafouz. Co-coordinator: David Lasagabaster. Board Liaison: Inmaculada Fortanet. Secretary: María del Mar Sánchez Pérez. Event Leader: Xavier Martin Rubio Irene Rivera: RG assistant and website manager (notice that Irene has been unable to work as website manager during this period).

Given that elections will take place in the parent association in October 2022, it is expected that renewal may occur in our RG but final decisions about how this will be handled have not been taken yet.

Publications

Regarding this point, the members of the Spain RG continue to be very active in the publication and dissemination of their work.

Report compiled by: Emma Dafouz, ICLHE Spain RG coordinator
Madrid, September 1, 2022



REPORT OF ICLHE PHD SIG 2021-22

COORDINATOR: MONICA CLUA

Overview: This has been the third year I have coordinated the group. Since last year we have held only one meeting. The second meeting scheduled for July had to be postponed.

Statement of purpose: *The aim of the group is to provide support to our growth as early career researchers through online discussions that cover academic content as well as issues related to the broad area of the research process itself and publishing. In time, the space should serve to foster a community that unifies students across different contexts, promote activities directed at PhD students and acknowledge the accomplishments of its members.*

Meetings: Three meetings were held in the last 12 months, all online.

The meeting was held online and generally followed the our usual structure:

- An academic issue: presentation of research work, an academic question, sharing of literature.
- Nuts and bolts: the logistics of PhD
- Pearls of wisdom: personal and professional developments, insights, advice and encouragement.
- Setting a tentative agenda for the next meeting.

Meeting contents:

October 15: 2 attendees

Topics: Post-covid restriction readjustments. Forthcoming PhD vivas, Job hunting.

December 3: 6 attendees

Topic: Pros and cons of Phd by compendium of articles or monograph.

May 27: 5 attendees

Topic: Publishing

Forthcoming meeting October.

Topic: Procrastination

Recruitment: Actions to recruit members to ICLHE are made in our research meetings.

Change of Coordinator: I read my thesis at the end of July 2021. I am happy to continue to

coordinate the group until a new volunteer is found.

Report compiled By:

Monica Clua

SIG Coordinator